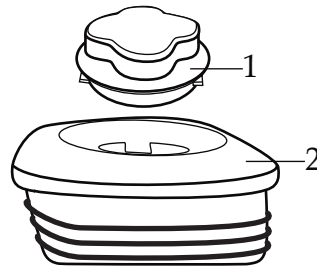
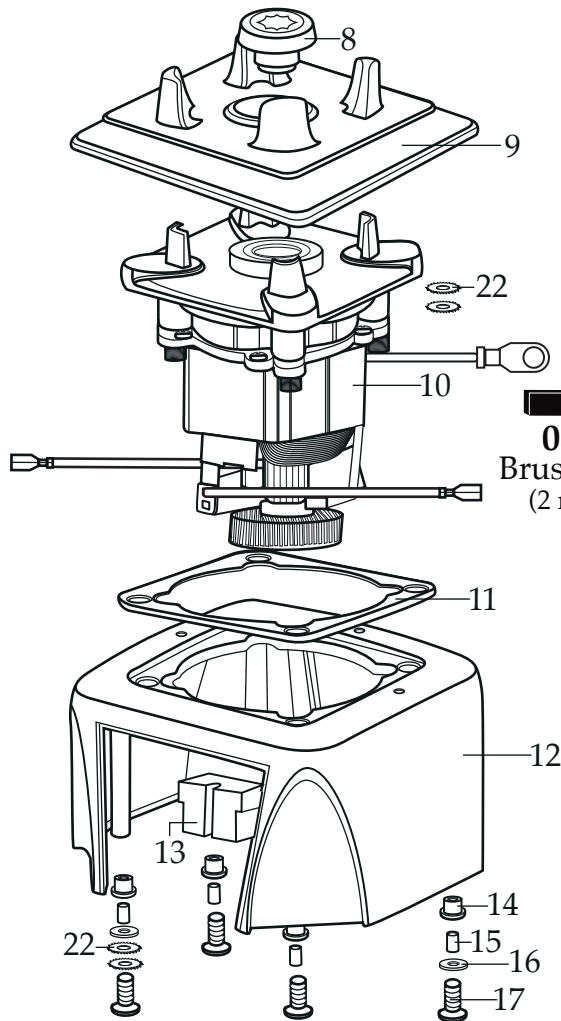


# WARING COMMERCIAL MX1200TXEE

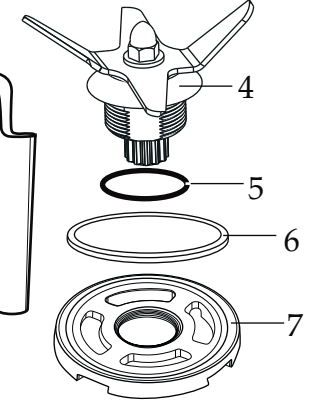
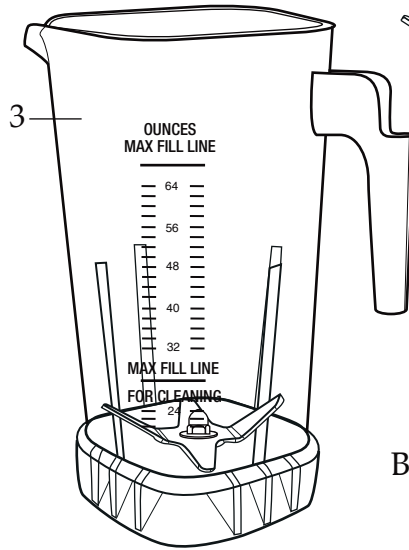
64 oz. stackable container Europe



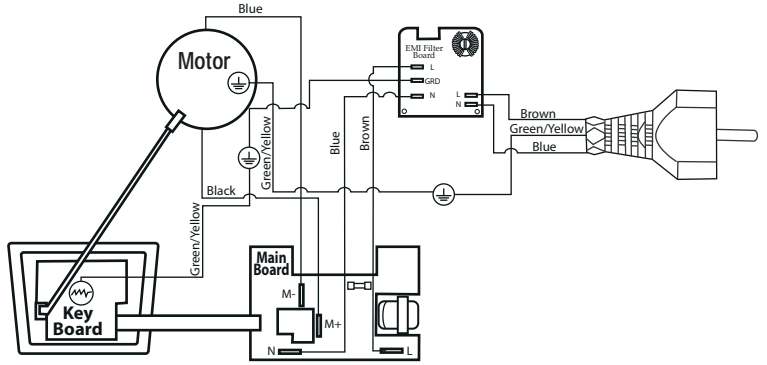
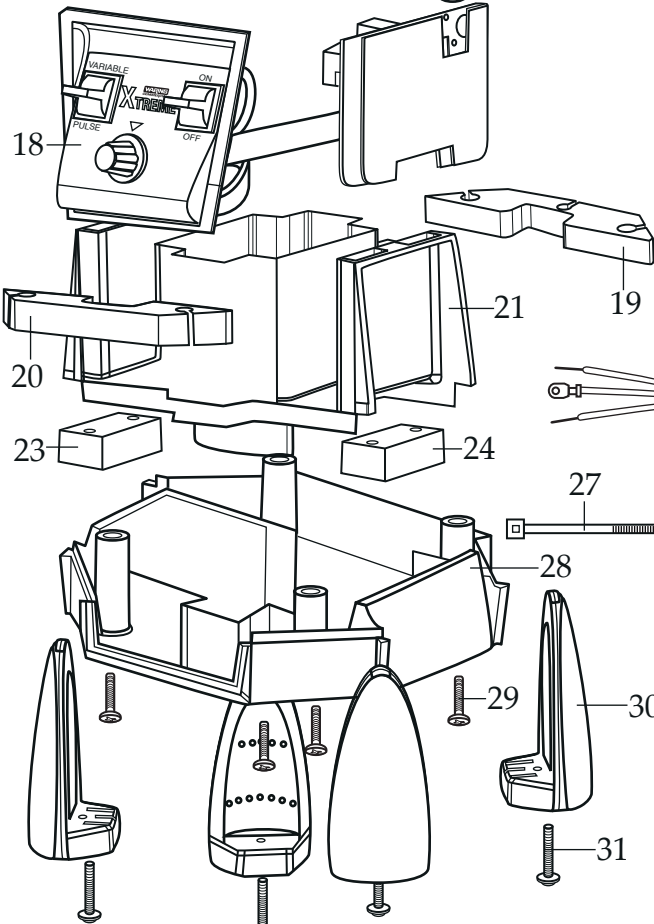
**032322**  
2 Piece Lid



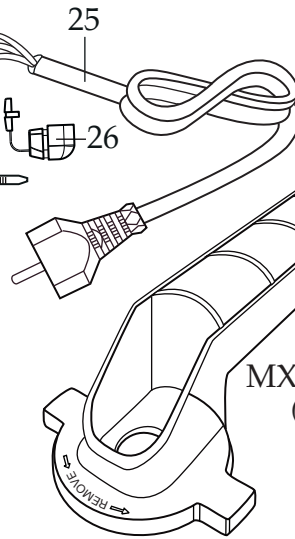
**033484**  
Brush/Spring  
(2 required)



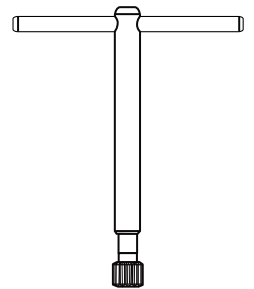
**030889**  
Blending Assy. Kit



**Wiring Diagram**



**032761**  
MX Jar Wrench  
(optional)



**503351**  
MX Coupling Wrench  
(optional)

<b>Illustration #</b>	<b>Part #</b>	<b>Description</b>
1	028769-E	Jar Lid Cover
2	028768	Jar Lid
3	503326	Jar ONLY (64 oz. stackable)
	503398	Jar with Blending Assembly (64 oz. stackable)
4	503397	Blade Assembly
5	024271	Bearing Holder O Ring
6	024268	Nut Gasket
7	029631	Bearing Holder Nut
8	028538	Drive Clutch
9	026442	Jar Pad
10	028824	Motor
11	026437	Dampening Plate Gasket
12	028032-09	Top Housing-black
13	028541	Motor Foam (2 Required)
14	026439	Dampening Plate Bushing (4 Required)
15	026453	Dampening Plate Sleeve (4 Required)
16	026459	Washer (2 Required)
17	028929	Screw (4 Required)
18	029817	Soft Start Control Panel
19	028248	Housing Foam Baffle (rear)
20	028249	Housing Foam Baffle (front)
21	028240	Motor Housing
22	002943	Washer (4 Required)
23	028247	Bottom Housing Foam Baffle
24	028542	Foam Baffle
25	503141	Cord Set
26	007556	Strain Relief
27	013731	Cable Tie (3 Required)
28	028241-09-x	Bottom Housing-black
29	012505	Screw (4 Required)
30	026430	Corner Post (4 Required)
31	028928	Screw (4 Required)